
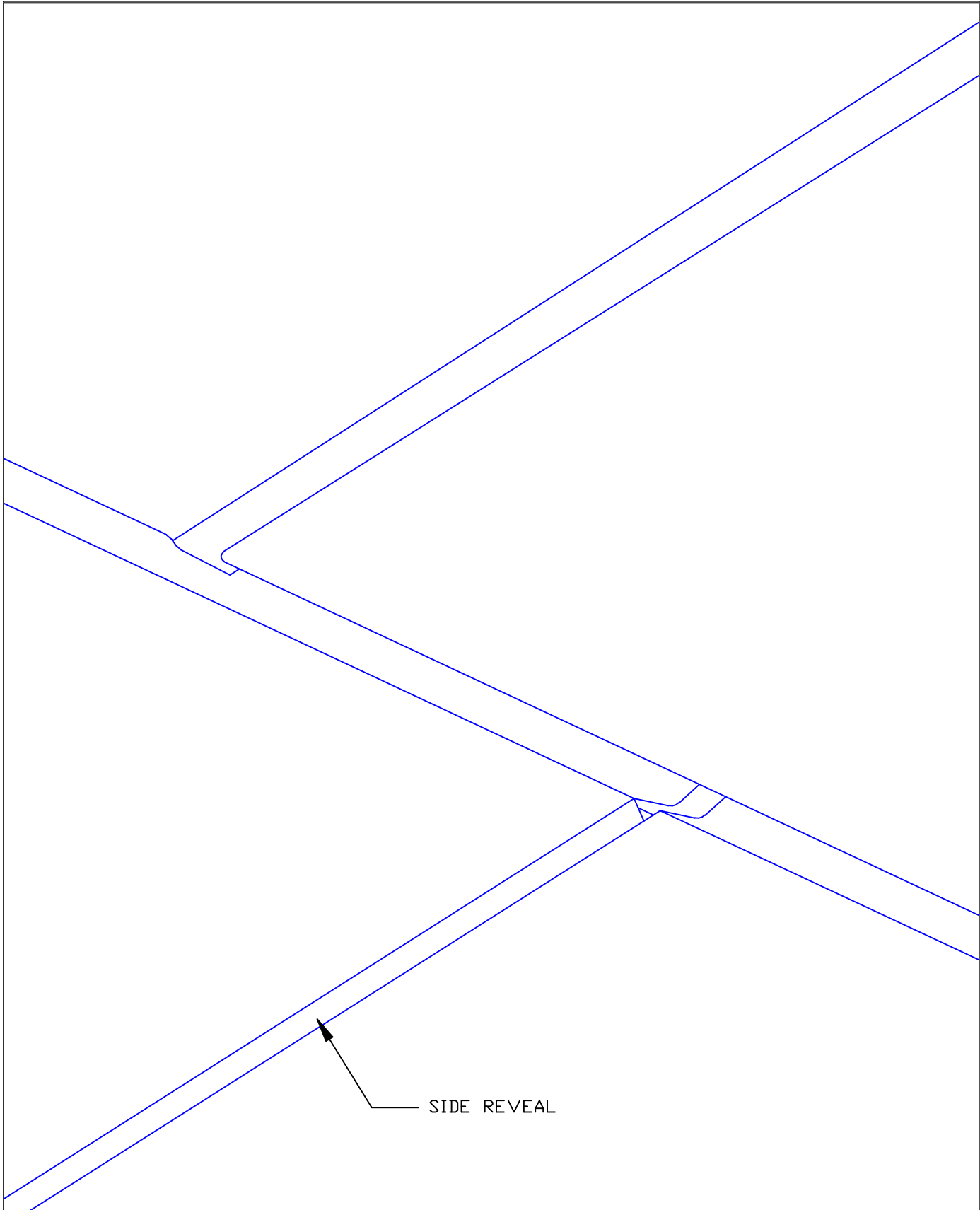



Lay-Flat Panel

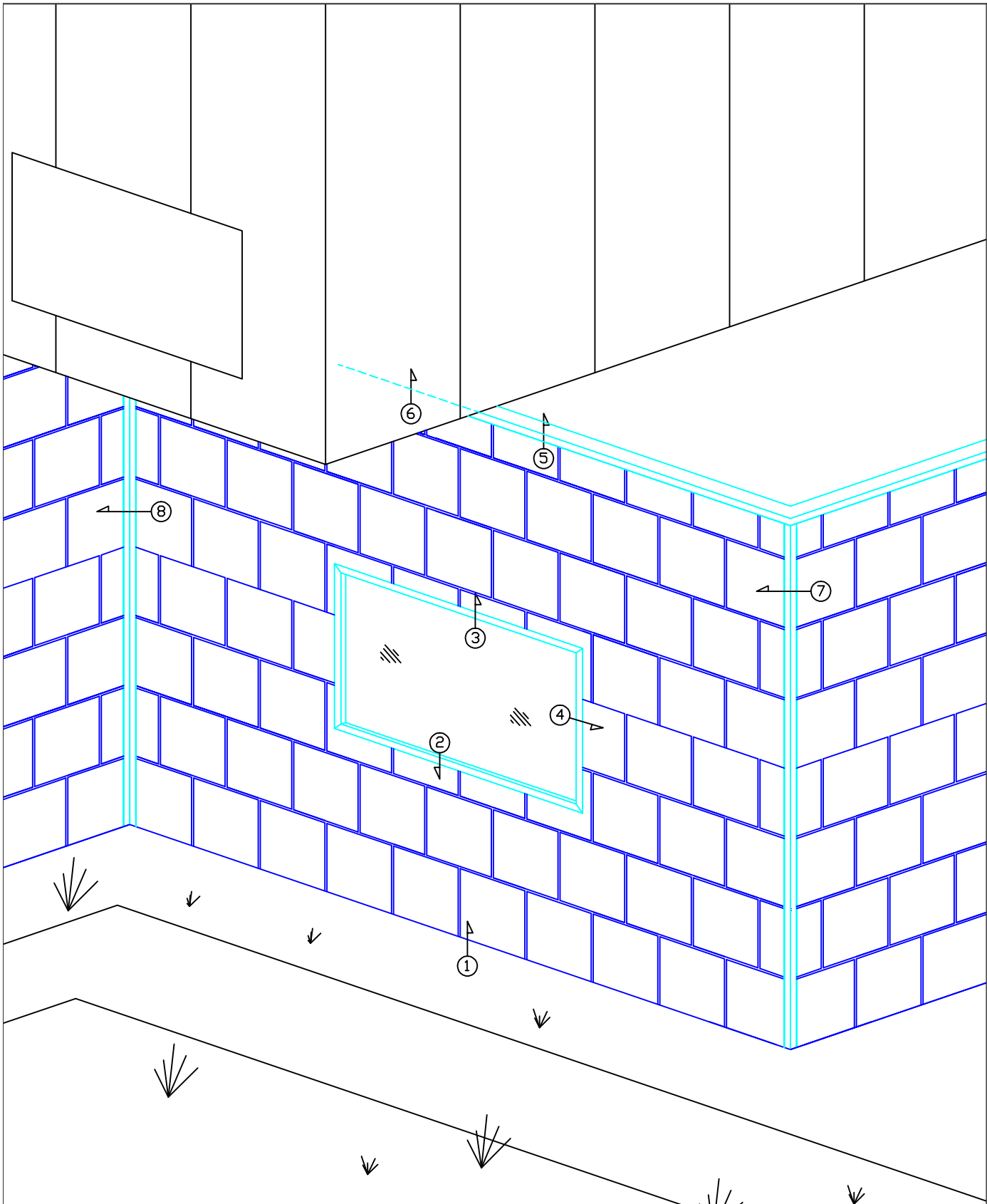
Lay-Flat Panel - Profile Details

 <p>Millennium tiles</p> <p><small>*The physics of Light Interference Color (LIC) prevent colored stainless steel from being 100% uniform</small></p>	<p>*STAINLESS COLORS</p> <p>NATURAL, PEWTER, WHEAT, BRONZE, BLUE, SLATE, BRONZE-GOLD, BURGUNDY, PURPLE-BLUE, PEACOCK, BLUE-GREEN, CHARCOAL (94/SCOTCHBRITE FINISH ONLY)</p>	<p>GA. AVAILABLE</p> <p>24 gauge - 16 gauge (.008" - (.0035"))</p> <p><small>operational thickness dependent upon panel sizes</small></p>	<p>MATERIALS</p> <p>STAINLESS STEEL + ZALMAG®</p>	<p>FINISH</p> <p>STAINLESS: BRIGHT (BA), MILL (2B)</p> <p>ZALMAG: NATURAL, PRE-PATINA II, KJANI GREEN, BARNA BRONZE</p>
			<p>SIZES AVAILABLE</p> <p>21" x 21" or 21" x 42"</p>	



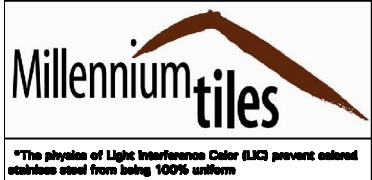
Lay-Flat Panel - Profile Details

 <p>Millennium tiles</p>	<p>*STAINLESS COLORS NATURAL, FEWTER, WHEAT, BRONZE, BLUE, SLATE, BRONZE-GOLD, BURGUNDY, PURPLE-BLUE, PEACOCK, BLUE-GREEN, CHARCOAL (#14/SCOTCHBRITE FINISH ONLY)</p>	<p>GA. AVAILABLE 24 gauge - 16 gauge (.008" - (.0035")) operational thickness dependent upon panel sizes</p>	<p>MATERIALS STAINLESS STEEL + ZALMAG®</p>	<p>FINISH STAINLESS: BRIGHT (BA), MILL (2B) ZALMAG: NATURAL, PRE-PATINA II, KUJANI GREEN, BARNA BRONZE</p>
			<p>SIZES AVAILABLE 21" x 21" or 21" x 42"</p>	
			<p><small>*The physics of Light Interference Color (LIC) prevent colored stainless steel from being 100% uniform</small></p>	



Lay-Flat Panel

Lay-Flat Panel - Detail Wall



***STAINLESS COLORS**
 NATURAL, FEWTER, WHEAT, BRONZE,
 BLUE, SLATE, BRONZE-GOLD,
 BURGUNDY, PURPLE-BLUE, PEACOCK,
 BLUE-GREEN, CHARCOAL
 (#4/SCOTCHBRITE FINISH ONLY)

GA. AVAILABLE
 24 gauge - 16 gauge
 (.008" - (.0035")
 operational thickness dependent
 upon panel size

MATERIALS
 STAINLESS STEEL + ZALMAG®

SIZES AVAILABLE
 21" x 21" or 21" x 42"

FINISH
 STAINLESS: BRIGHT (BA), MILL (2B)
 ZALMAG: NATURAL,
 PRE-PATINA II, KUJANI
 GREEN, BARNA
 BRONZE

*The physics of Light Interference Color (LIC) prevent colored stainless steel from being 100% uniform

STANDARD CLIP

LAY-FLAT PANEL

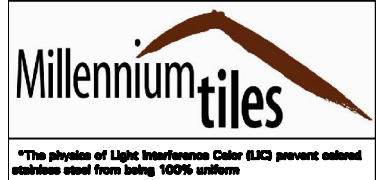
25 PSI INSULATION

VENTED HORIZONTAL ZEE ATTACHMENT

STARTER CLEAT

Lay-Flat Panel

Lay-Flat Panel - Section Base



***STAINLESS COLORS**
 NATURAL, FEWTER, WHEAT, BRONZE,
 BLUE, SLATE, BRONZE-GOLD,
 BURGUNDY, PURPLE-BLUE, PEACOCK,
 BLUE-GREEN, CHARCOAL
 (#4/SCOTCHBRITE FINISH ONLY)

GA. AVAILABLE
 24 gauge - 16 gauge
 (.0075" - (.0085")
 operational thickness dependent
 upon panel size

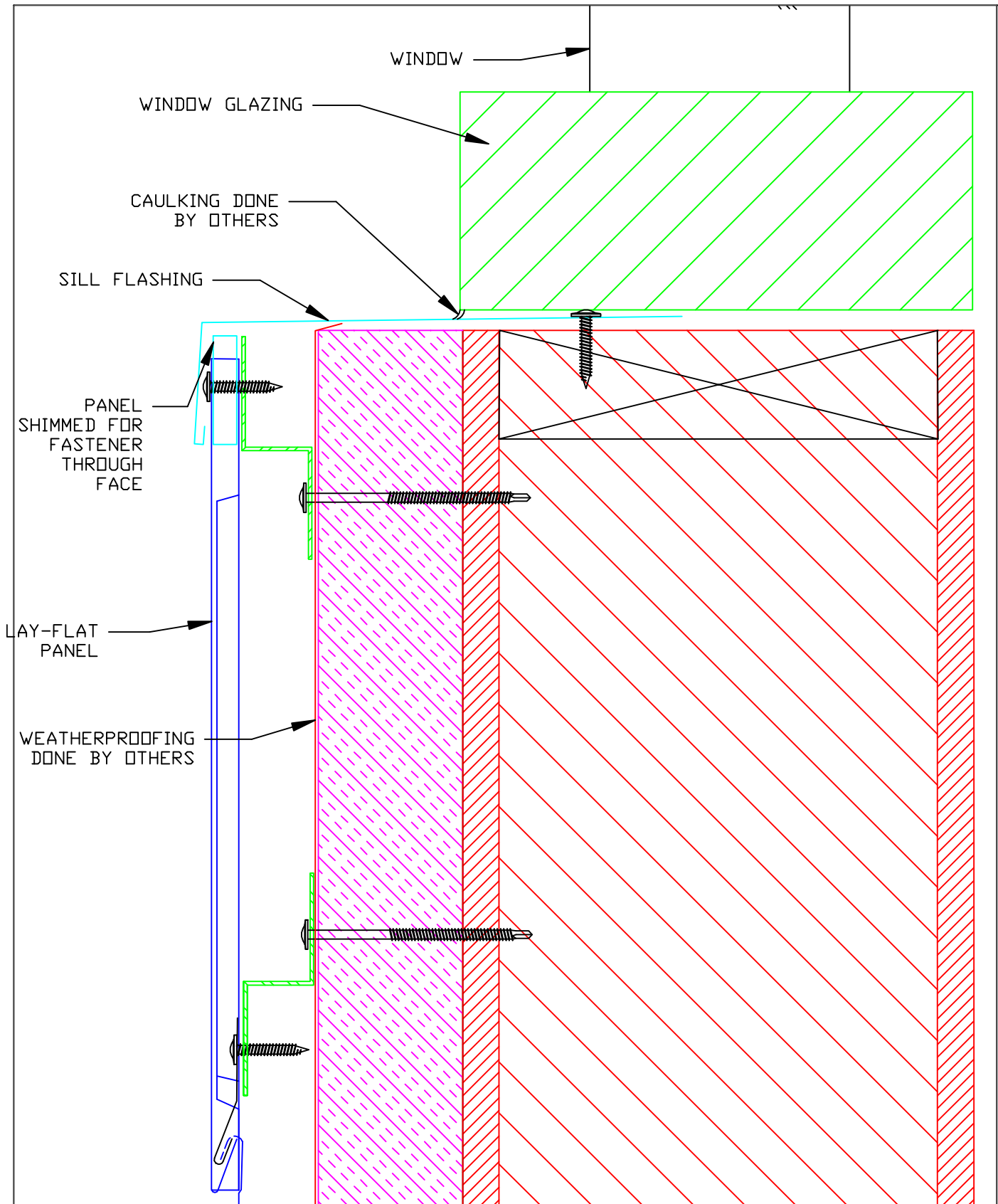
MATERIALS
 STAINLESS STEEL + ZALMAG®

SIZES AVAILABLE
 21" x 21" or 21" x 42"

FINISH
 STAINLESS: BRIGHT (BA), MILL (#8)
 ZALMAG: NATURAL,
 PRE-PATINA II, KUANI
 GREEN, BARNA
 BRONZE


*The physics of Light Interference Color (LIC) prevent colored stainless steel from being 100% uniform

DETAIL
 1



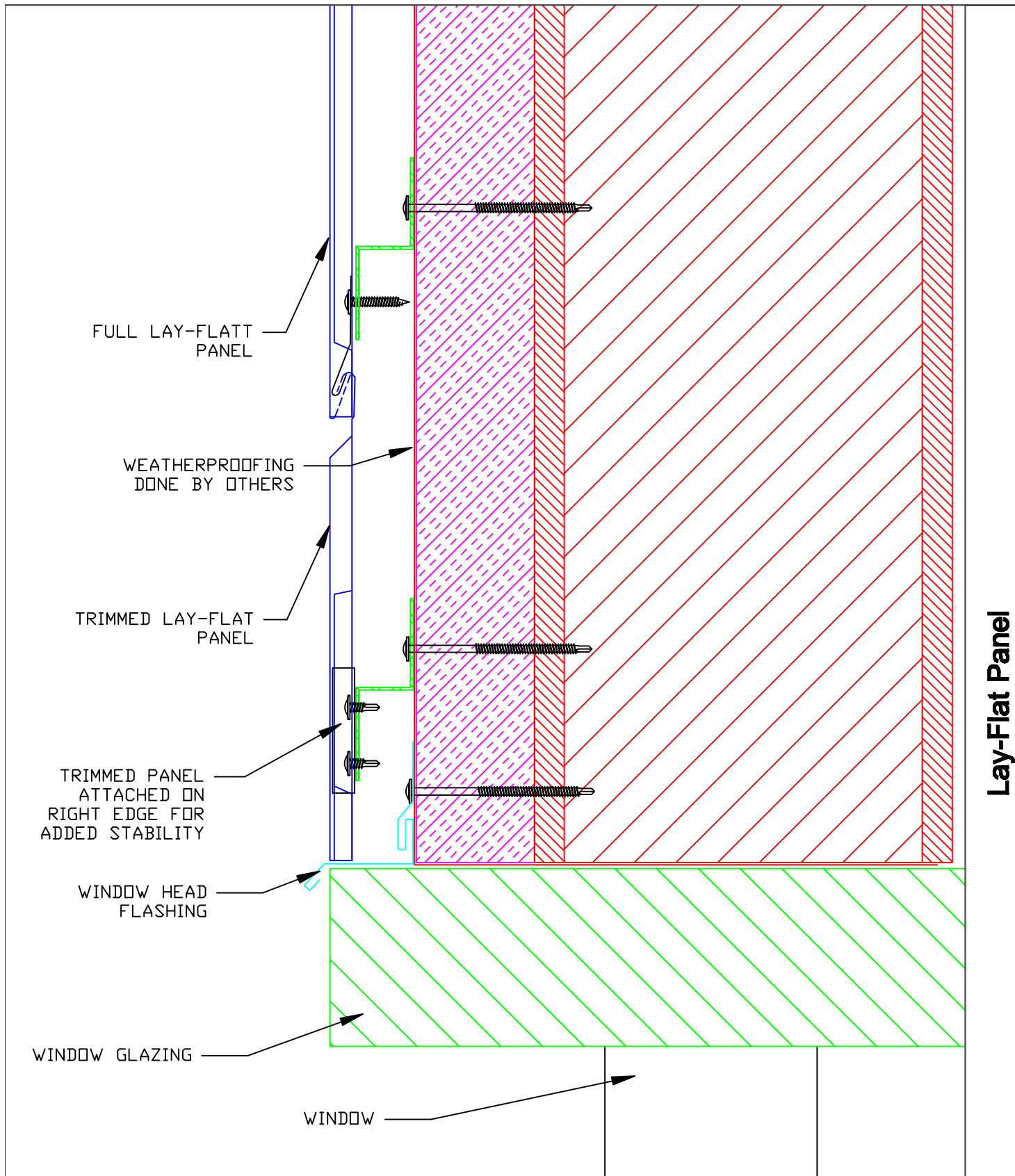
Lay-Flat Panel

Lay-Flat Panel - Window Sill


 <p>Millennium tiles</p> <p><small>*The physics of Light Interference Color (LIC) prevent colored stainless steel from being 100% uniform</small></p>	<p>*STAINLESS COLORS</p> <p>NATURAL, PEWTER, WHEAT, BRONZE, BLUE, SLATE, BRONZE-GOLD, BURGUNDY, PURPLE-BLUE, PEACOCK, BLUE-GREEN, CHARCOAL (#4/BOOTHBRITE FINISH ONLY)</p>	<p>GA. AVAILABLE</p> <p>24 gauge - 16 gauge (.007" - .008")</p> <p>operational thickness dependent upon panel size</p>	<p>MATERIALS</p> <p>STAINLESS STEEL + ZALMAG®</p>	<p>FINISH</p> <p>STAINLESS: BRIGHT (BA), MILL (2B)</p> <p>ZALMAG: NATURAL, PRE-PATINA II, KJANI GREEN, BARNA BRONZE</p>
			<p>SIZES AVAILABLE</p> <p>21" x 21" or 21" x 42"</p>	

DETAIL

2

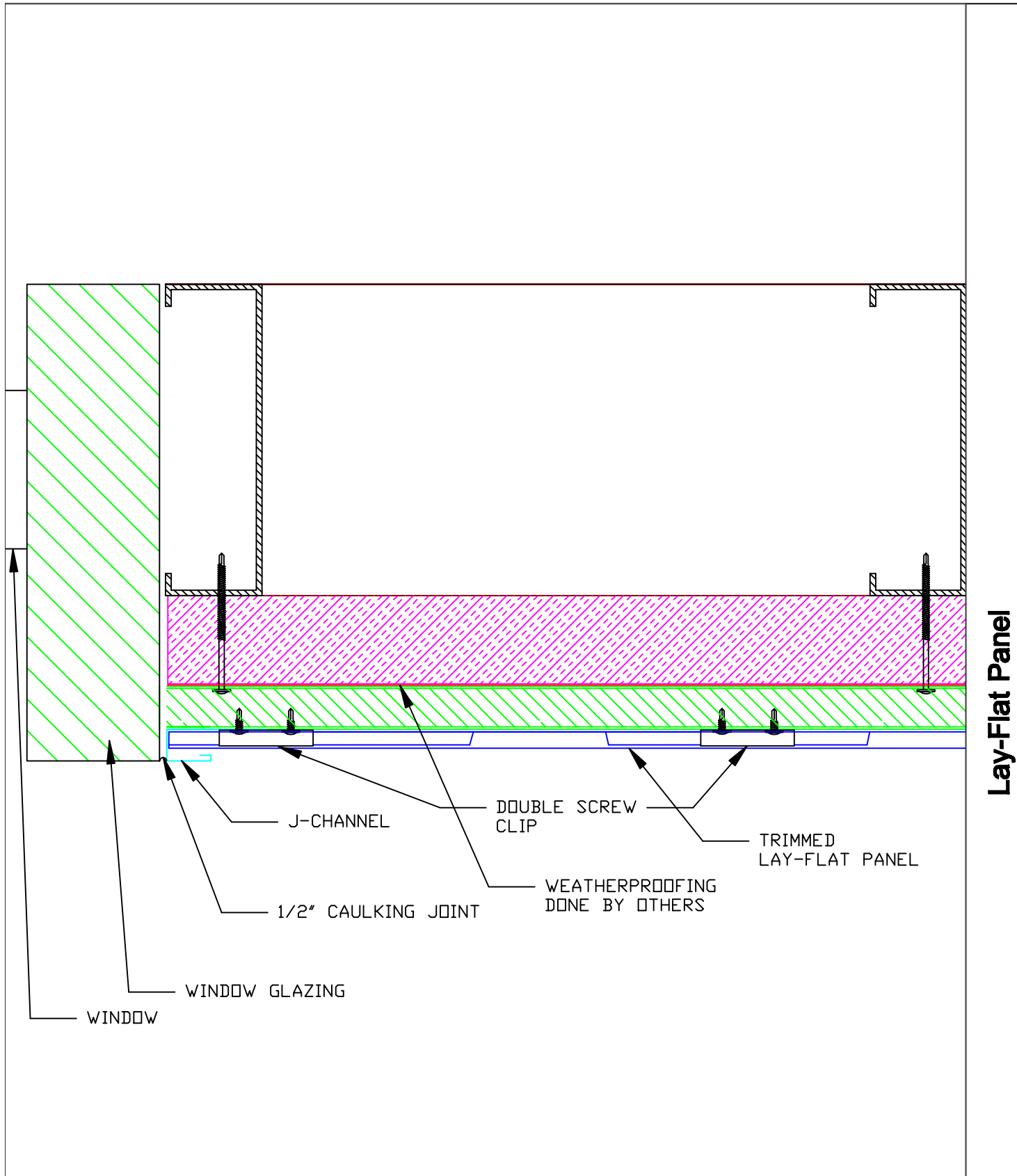


Lay-Flat Panel - Window Head

 <p>Millennium tiles</p> <p><small>*The physics of Light Interference Color (LIC) prevent colored stainless steel from being 100% uniform</small></p>	<p>*STAINLESS COLORS</p> <p>NATURAL, FEWTER, WHEAT, BRONZE, BLUE, SLATE, BRONZE-GOLD, BURGUNDY, PURPLE-BLUE, PEACOCK, BLUE-GREEN, CHARCOAL (94/900TCHBRITE FINISH ONLY)</p>	<p>GA. AVAILABLE</p> <p>24 gauge - 16 gauge (.008" - .005")</p> <p><small>operational thickness dependent upon panel abuse</small></p>	<p>MATERIALS</p> <p>STAINLESS STEEL + ZALMAG®</p>	<p>FINISH</p> <p>STAINLESS: BRIGHT (BA), MILL (2B)</p> <p>ZALMAG: NATURAL, PRE-PATINA II, KJANI GREEN, BARNA BRONZE</p>
			<p>SIZES AVAILABLE</p> <p>21" x 21" or 21" x 42"</p>	


DETAIL

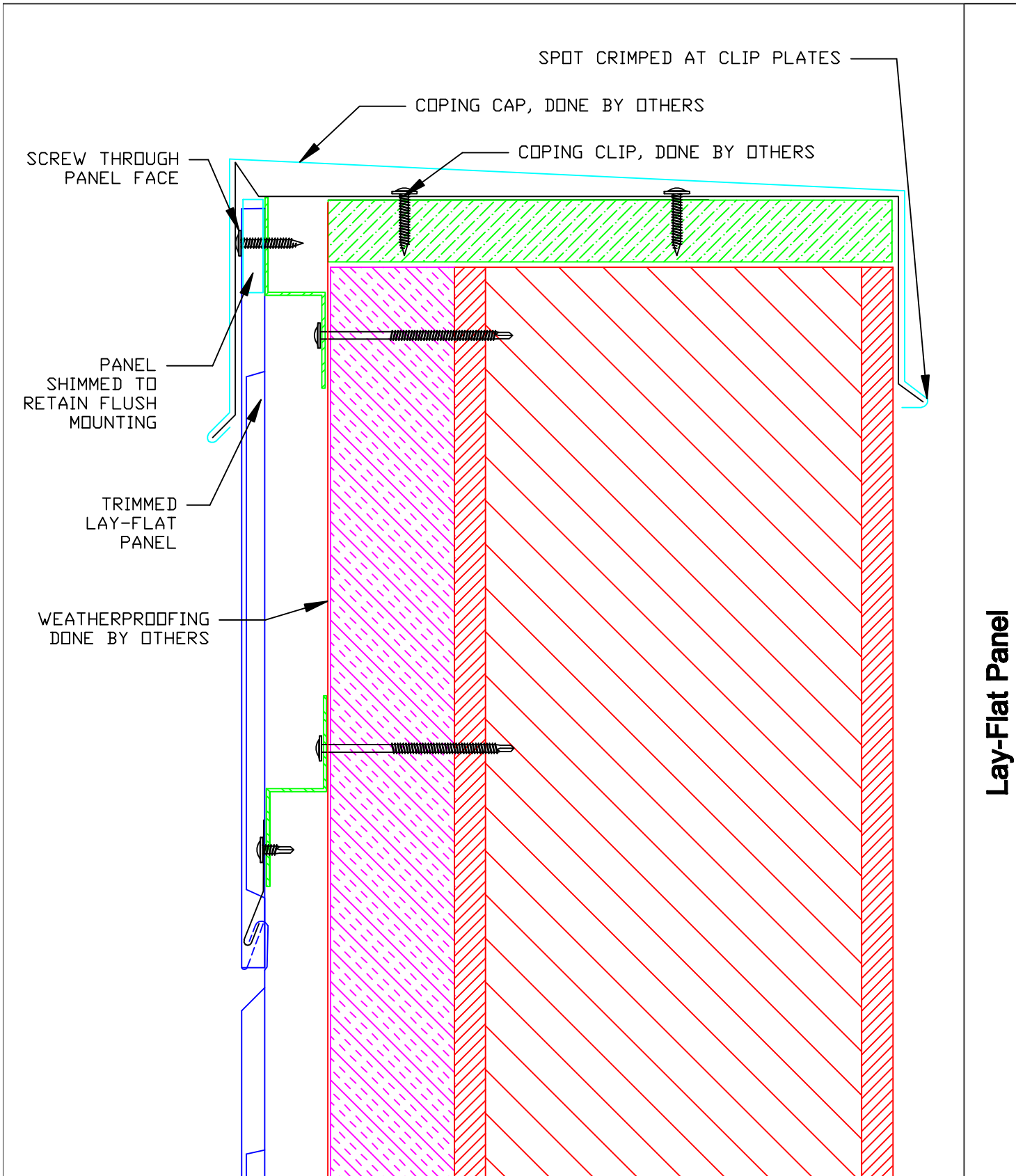
3



Lay-Flat Panel


Lay-Flat Panel - Window Jam

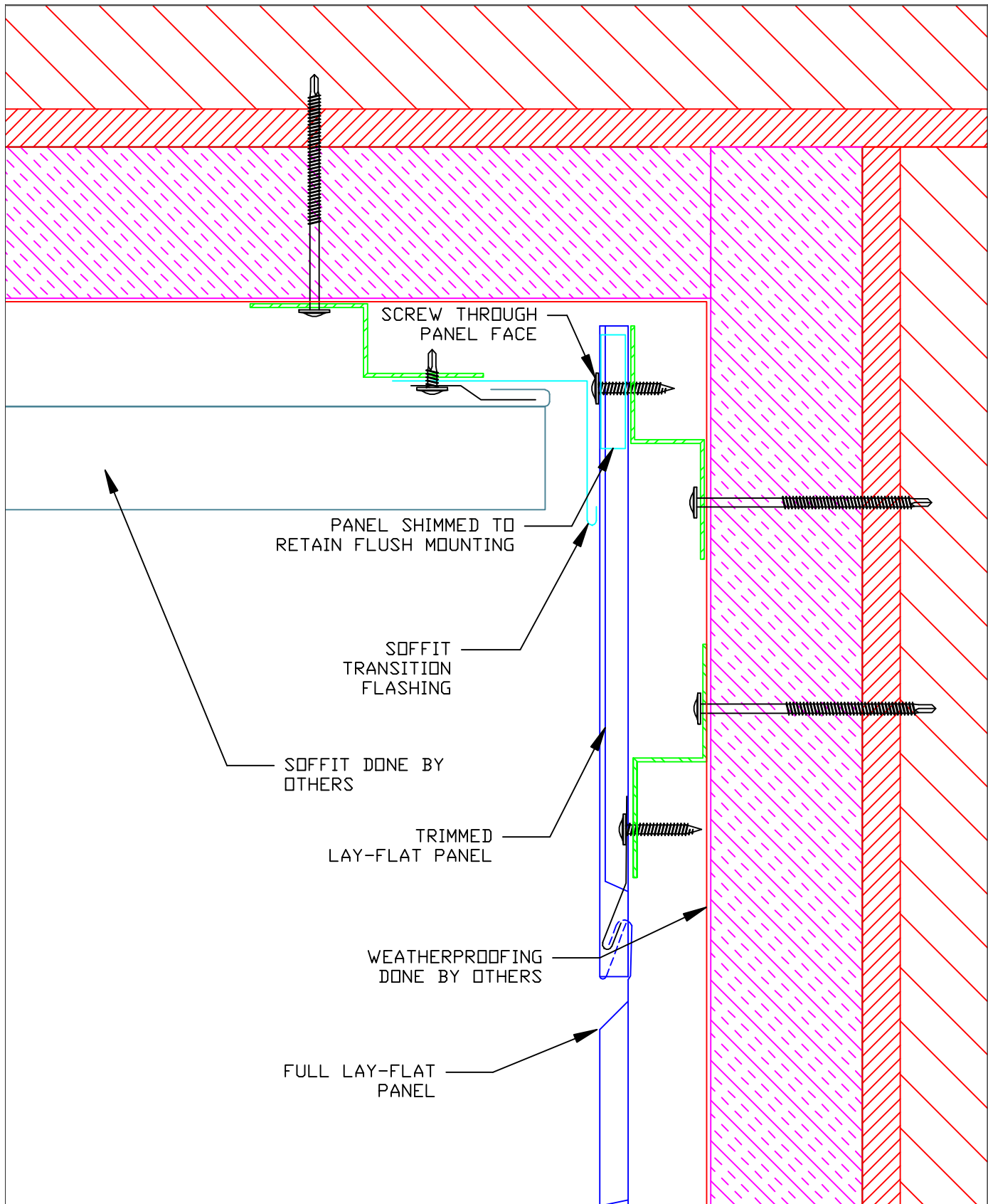
 <p>Millennium tiles</p> <p><small>*The physics of Light Interference Color (LIC) prevent colored stainless steel from being 100% uniform</small></p>	<p>*STAINLESS COLORS</p> <p>NATURAL, FEWTER, WHEAT, BRONZE, BLUE, SLATE, BRONZE-GOLD, BURGUNDY, PURPLE-BLUE, PEACOCK, BLUE-GREEN, CHARCOAL (94/SCOTCHBRITE FINISH ONLY)</p>	<p>GA. AVAILABLE</p> <p>24 gauge - 16 gauge (.008\" - .0030\")</p> <p>operational thickness dependent upon panel sizes</p>	<p>MATERIALS</p> <p>STAINLESS STEEL + ZALMAG®</p>	<p>FINISH</p> <p>STAINLESS: BRIGHT (BA), MILL (2B)</p> <p>ZALMAG: NATURAL, PRE-PATINA II, KUJANI GREEN, BARNA BRONZE</p>
			<p>SIZES AVAILABLE</p> <p>21\" x 21\" or 21\" x 42\"</p>	



Lay-Flat Panel


Lay-Flat Panel - Coping

 <p><small>*The physics of Light Interference Color (LIC) prevent colored stainless steel from being 100% uniform</small></p>	*STAINLESS COLORS	GA. AVAILABLE	MATERIALS	FINISH
	NATURAL, FEWTER, WHEAT, BRONZE, BLUE, SLATE, BRONZE-GOLD, BURGUNDY, PURPLE-BLUE, PEACOCK, BLUE-GREEN, CHARCOAL (94/SCOTCHBRITE FINISH ONLY)	24 gauge - 16 gauge (.008" - (.0085")) operational thickness dependent upon panel size	STAINLESS STEEL + ZALMAG®	STAINLESS: BRIGHT (BA), MILL (2B) ZALMAG: NATURAL, PRE-PATINA II, KJANI, GREEN, BARNA, BRONZE
			SIZES AVAILABLE	
			21" x 21" or 21" x 42"	

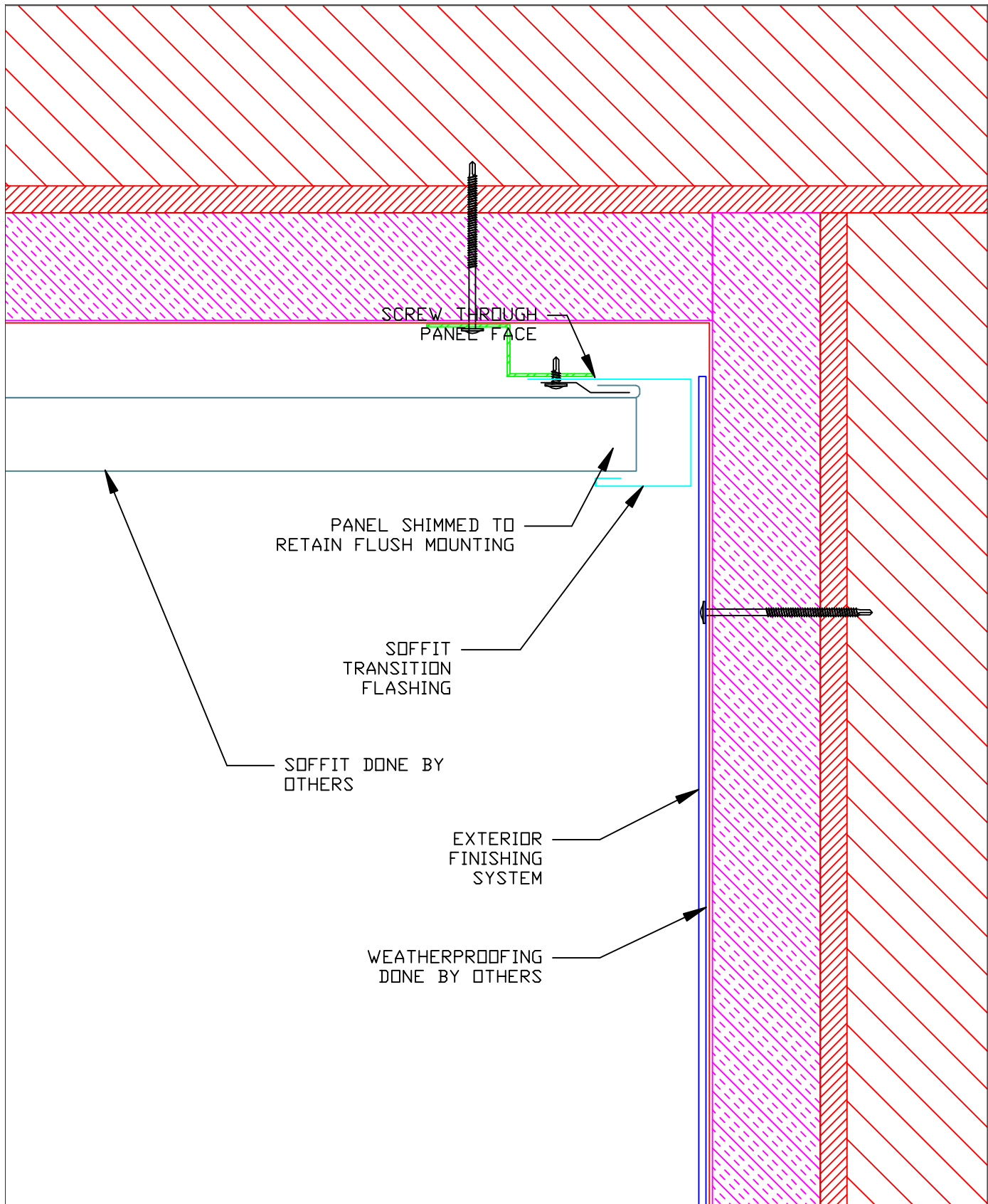


Lay-Flat Panel

Lay-Flat Panel - Soffit Transition


 <p>Millennium tiles</p> <p><small>*The physics of Light Interference Color (LIC) prevent colored stainless steel from being 100% uniform</small></p>	<p>*STAINLESS COLORS</p> <p>NATURAL, FEWTER, WHEAT, BRONZE, BLUE, SLATE, BRONZE-GOLD, BURGUNDY, PURPLE-BLUE, PEACOCK, BLUE-GREEN, CHARCOAL (94/SCOTCHBRITE FINISH ONLY)</p>	<p>GA. AVAILABLE</p> <p>24 gauge - 16 gauge (.008" - .005")</p> <p><small>operational thickness dependent upon panel size</small></p>	<p>MATERIALS</p> <p>STAINLESS STEEL + ZALMAG®</p>	<p>FINISH</p> <p>STAINLESS: BRIGHT (BA), MILL (2B)</p> <p>ZALMAG: NATURAL, PRE-PATINA II, KJANI, GREEN, BARNA, BRONZE</p>
			<p>SIZES AVAILABLE</p> <p>21" x 21" or 21" x 42"</p>	

DETAIL
6A

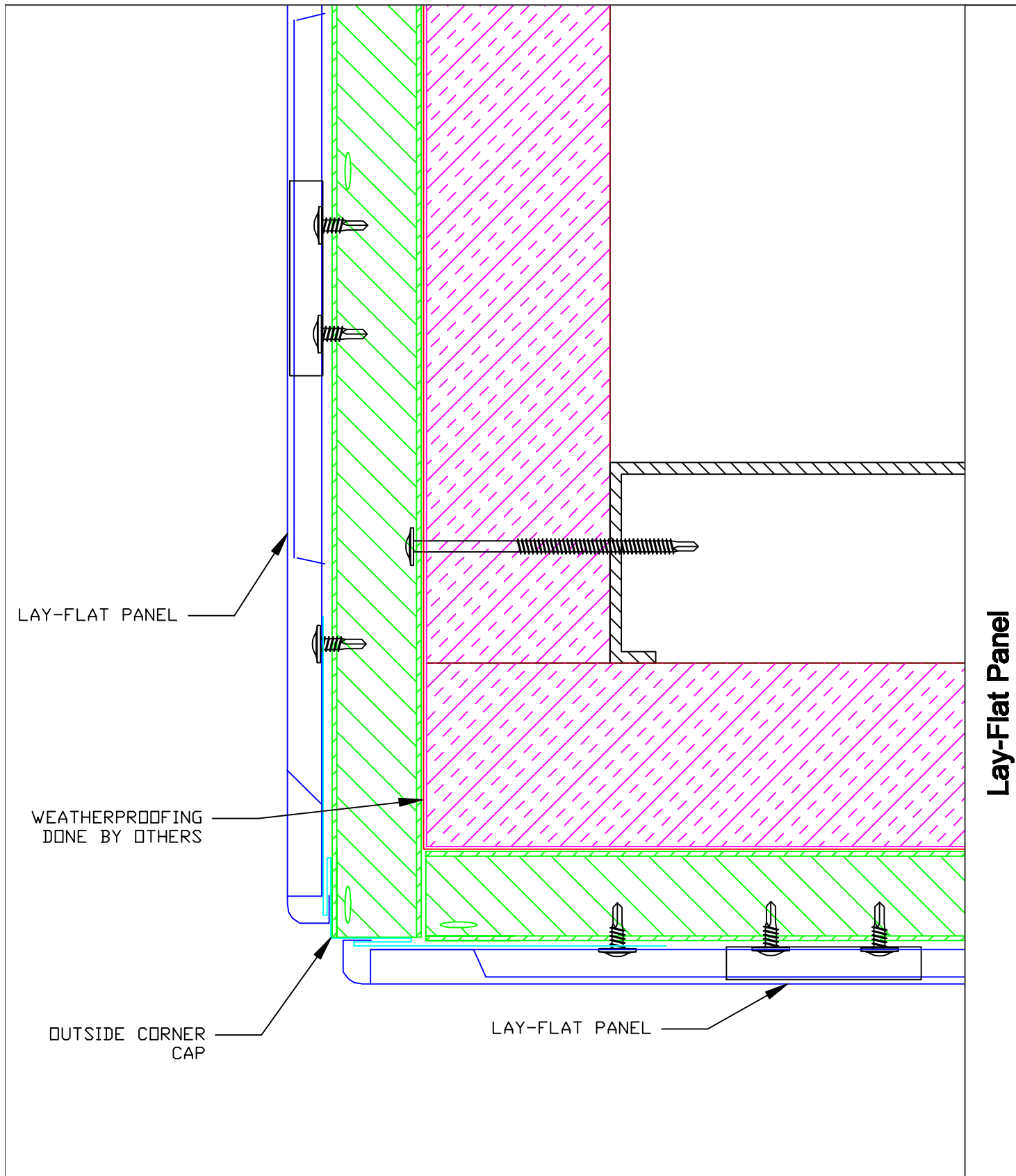


Lay-Flat Panel


Lay-Flat Panel - Soffit Transition

 <p>Millennium tiles</p> <p><small>*The physics of Light Interference Color (LIC) prevent colored stainless steel from being 100% uniform</small></p>	<p>*STAINLESS COLORS</p> <p>NATURAL, FEWTER, WHEAT, BRONZE, BLUE, SLATE, BRONZE-GOLD, BURGUNDY, PURPLE-BLUE, PEACOCK, BLUE-GREEN, CHARCOAL (94/SCOTCHBRITE FINISH ONLY)</p>	<p>GA. AVAILABLE</p> <p>24 gauge - 16 gauge (.008" - (.0030"))</p> <p>operational thickness dependent upon panel abuse</p>	<p>MATERIALS</p> <p>STAINLESS STEEL + ZALMAG®</p>	<p>FINISH</p> <p>STAINLESS: BRIGHT (BA), MILL (2B)</p> <p>ZALMAG: NATURAL, PRE-PATINA II, KJANI GREEN, BARNA BRONZE</p>
			<p>SIZES AVAILABLE</p> <p>21" x 21" or 21" x 42"</p>	

DETAIL
6B

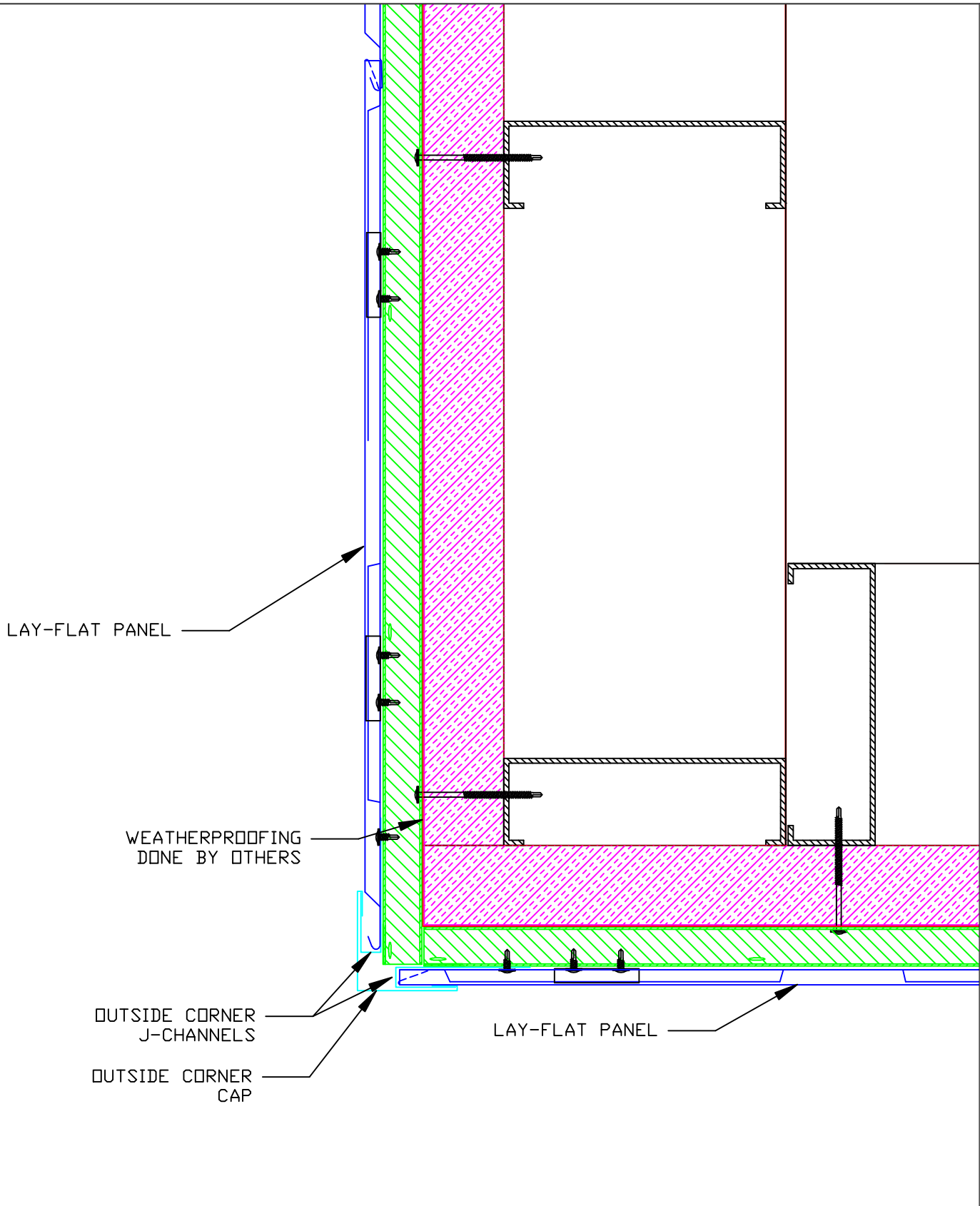


Lay-Flat Panel - Outside Corner

 <p>Millennium tiles</p> <p><small>*The physics of Light Interference Color (LIC) prevent colored stainless steel from being 100% uniform</small></p>	<p>*STAINLESS COLORS</p> <p>NATURAL, FEWTER, WHEAT, BRONZE, BLUE, SLATE, BRONZE-GOLD, BURGUNDY, PURPLE-BLUE, PEACOCK, BLUE-GREEN, CHARCOAL (94/SCOTCHBRITE FINISH ONLY)</p>	<p>GA. AVAILABLE</p> <p>24 gauge - 16 gauge (.025" - .008")</p> <p><small>operational thickness dependent upon panel sizes</small></p>	<p>MATERIALS</p> <p>STAINLESS STEEL + ZALMAG®</p>	<p>FINISH</p> <p>STAINLESS: BRIGHT (BA), MILL (2B)</p> <p>ZALMAG: NATURAL, PRE-PATINA II, KUJANI GREEN, BARNA BRONZE</p>
			<p>SIZES AVAILABLE</p> <p>21" x 21" or 21" x 42"</p>	

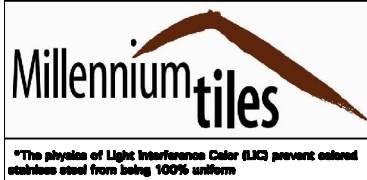
Lay-Flat Panel

DETAIL
7B



Lay-Flat Panel

Lay-Flat Panel - Outside Corner



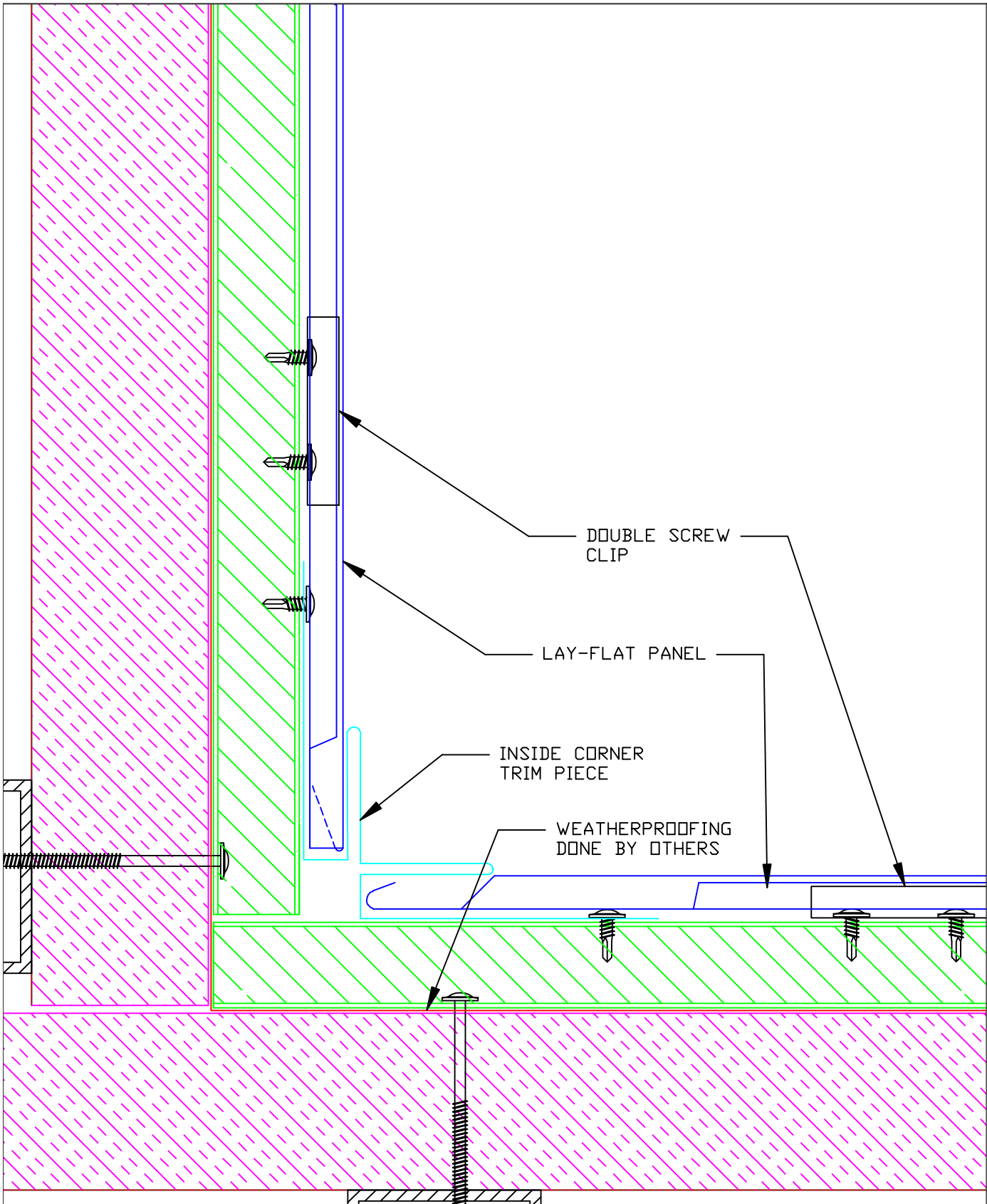
*STAINLESS COLORS
NATURAL, PEWTER, WHEAT, BRONZE, BLUE, SLATE, BRONZE-GOLD, BURGUNDY, PURPLE-BLUE, PEACOCK, BLUE-GREEN, CHARCOAL (#4/SCOTCHBRITE FINISH ONLY)

GA. AVAILABLE
24 gauge - 16 gauge (.020" - (.0305"))
<small>operational thickness dependent upon panel size</small>


MATERIALS
STAINLESS STEEL + ZALMAG®
SIZES AVAILABLE
21" x 21" or 21" x 42"

FINISH
STAINLESS: BRIGHT (BA), MILL (2B)
ZALMAG: NATURAL, PRE-PATINA II, KUANI GREEN, BARNA BRONZE

DETAIL
7A



Lay-Flat Panel - Inside Corner

 <p>Millennium tiles</p> <p><small>*The physics of Light Interference Color (LIC) prevent colored stainless steel from being 100% uniform</small></p>	<p>*STAINLESS COLORS</p> <p>NATURAL, PEWTER, WHEAT, BRONZE, BLUE, SLATE, BRONZE-GOLD, BURGUNDY, PURPLE-BLUE, PEACOCK, BLUE-GREEN, CHARCOAL (94/SCOTCHBRITE FINISH ONLY)</p>	<p>GA. AVAILABLE</p> <p>24 gauge - 16 gauge (.008" - .005")</p> <p>operational thickness dependent upon panel abuse</p>	<p>MATERIALS</p> <p>STAINLESS STEEL + ZALMAG®</p>	<p>FINISH</p> <p>STAINLESS: BRIGHT (BA), MILL (2B)</p> <p>ZALMAG: NATURAL, PRE-PATINA II, KUANI GREEN, BARNA BRONZE</p>
			<p>SIZES AVAILABLE</p> <p>21" x 21" or 21" x 42"</p>	

LAY-FLAT PANEL

VENTED
HORIZONTAL ZEE
ATTACHMENT

Lay-Flat Panel

Lay-Flat Panel - Wall Assembly Over Exterior Insulation



***STAINLESS COLORS**
NATURAL, PEWTER, WHEAT, BRONZE,
BLUE, SLATE, BRONZE-GOLD,
BURGUNDY, PURPLE-BLUE, PEACOCK,
BLUE-GREEN, CHARCOAL
(#4/SCOTCHBRITE FINISH ONLY)

GA. AVAILABLE
24 gauge - 16 gauge
(.0075" - (.0050")
operational thickness dependent
upon panel size

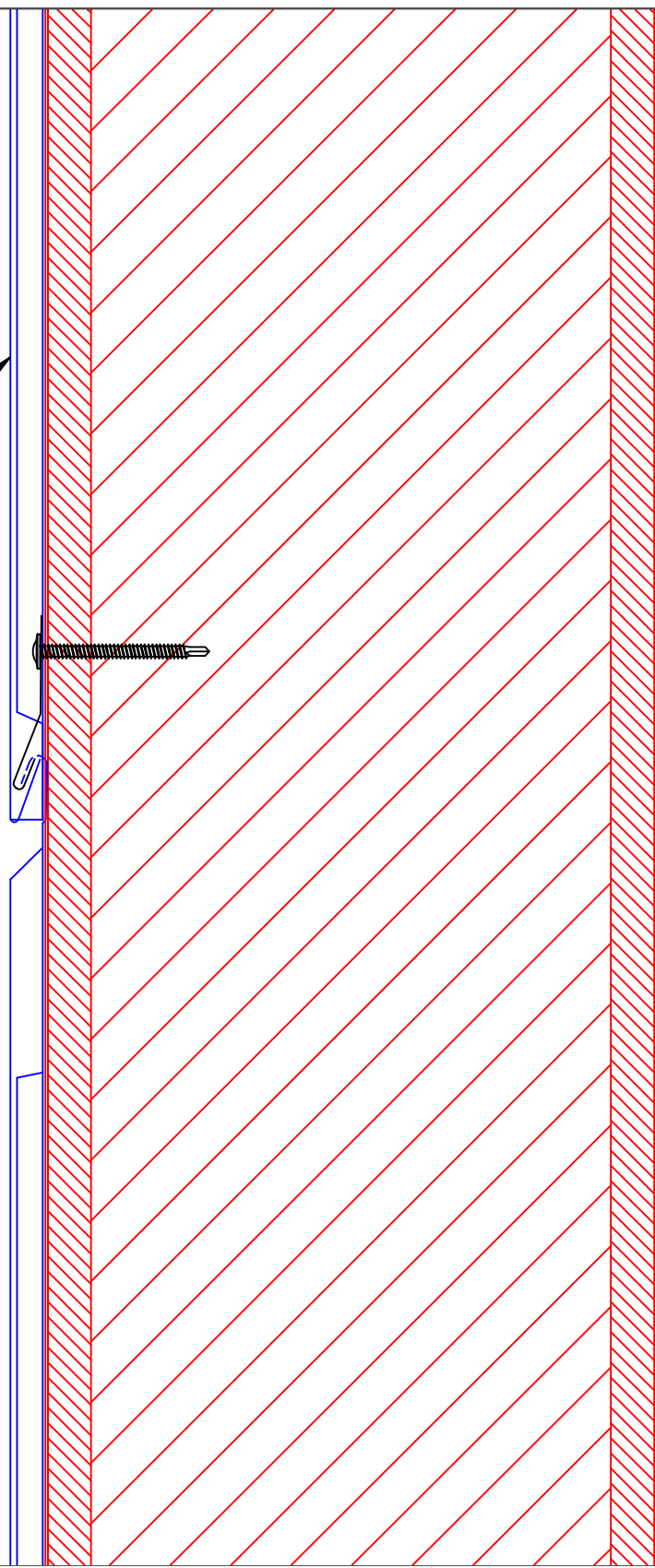
MATERIALS
STAINLESS STEEL + ZALMAG®
SIZES AVAILABLE
21" x 21" or 21" x 42"

FINISH
STAINLESS: BRIGHT (BA), MILL (2B)
ZALMAG: NATURAL,
PRE-PATINA II, KUJANI
GREEN, BARNA
BRONZE

*The physics of Light Interference Color (LIC) prevent colored stainless steel from being 100% uniform

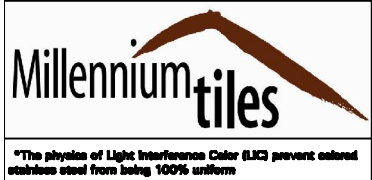
DETAIL
9A

LAY-FLAT PANEL



Lay-Flat Panel

Lay-Flat Panel - Wall Assembly Over Plywood



*The physics of Light Interference Color (LIC) prevent colored stainless steel from being 100% uniform

*STAINLESS COLORS
NATURAL, FEWTER, WHEAT, BRONZE, BLUE, SLATE, BRONZE-GOLD, BURGUNDY, PURPLE-BLUE, PEACOCK, BLUE-GREEN, CHARCOAL (94/SCOTCHBRITE FINISH ONLY)

GA. AVAILABLE
24 gauge - 16 gauge (.020" - (.0305"))
operational thickness dependent upon panel size

MATERIALS
STAINLESS STEEL + ZALMAG®
SIZES AVAILABLE
21" x 21" or 21" x 42"

FINISH
STAINLESS: BRIGHT (BA), MILL (2B)
ZALMAG: NATURAL, PRE-PATINA II, KUJANI GREEN, BARNA BRONZE

DETAIL
9B